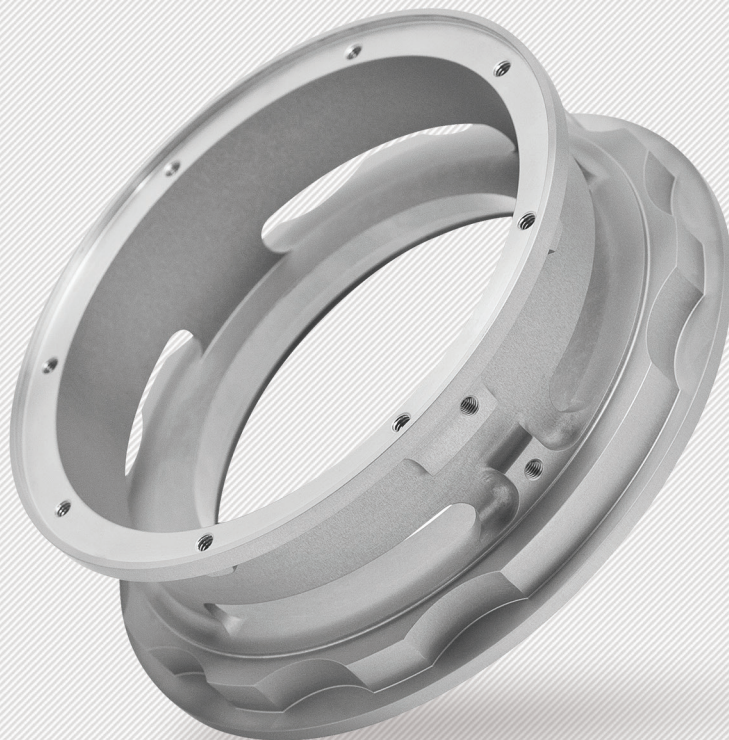




Manufacturing Excellence



AEROSPACE

DEFENSE

INDUSTRIAL

MEDICAL

50 YEARS OF EXCELLENCE



S&H Machine has been manufacturing complex machined parts for the Aerospace, Industrial, Defense, and Medical markets for more than fifty years. You can rely on our expertise.

Our performance speaks for itself. We manufacture perfect parts that arrive on-time, every time. There are no more headaches or hassles, just consistently reliable performance.

THE BEST VALUE



01 SHORT LEAD TIME

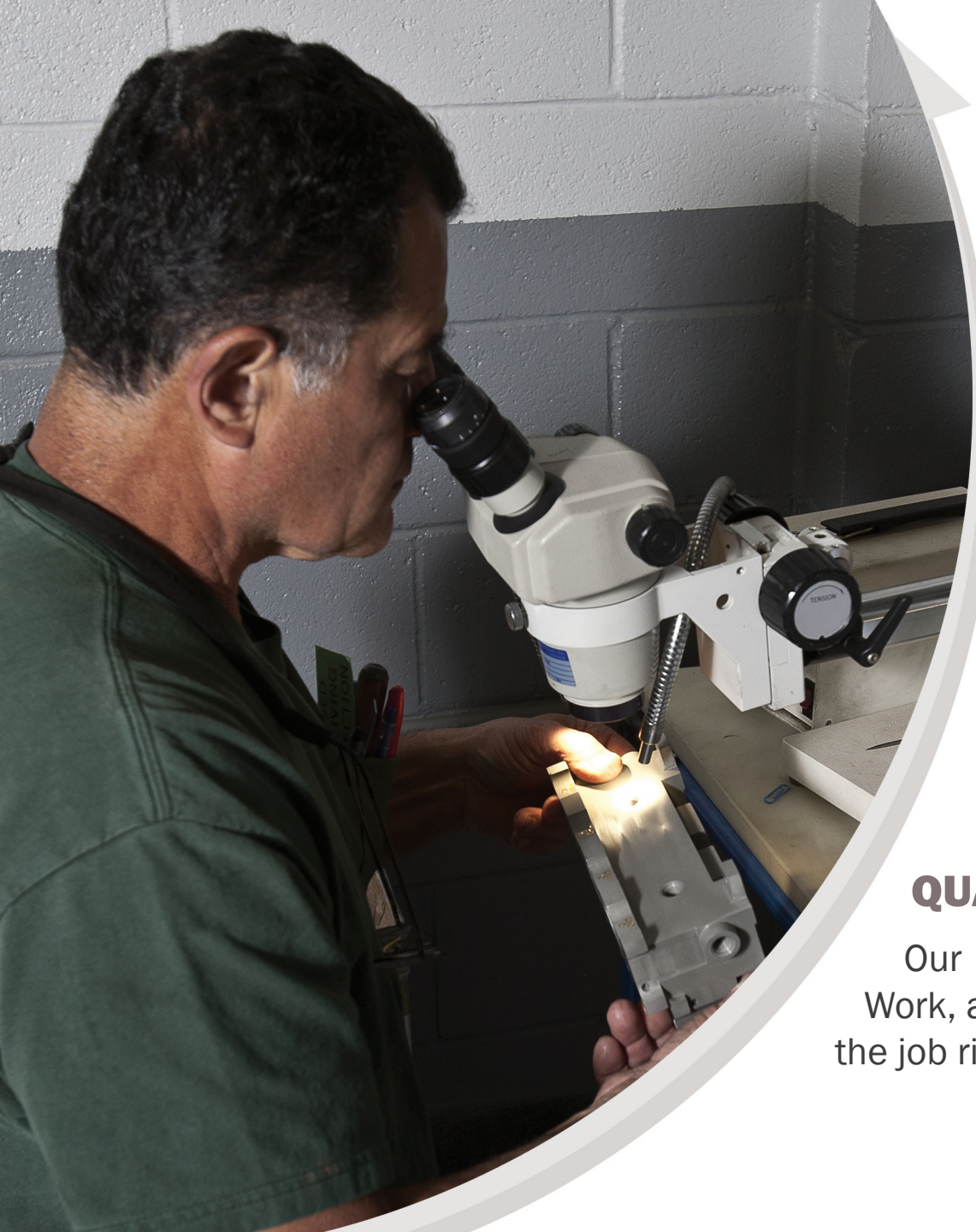
When do you need it?
Lead time reduction is a paramount concern for the industries we serve. S&H relies on Lean principles and the development of standard processes to reduce setup and run times so we can remain competitive in today's marketplace.

S&H Advantage

S&H Advantage

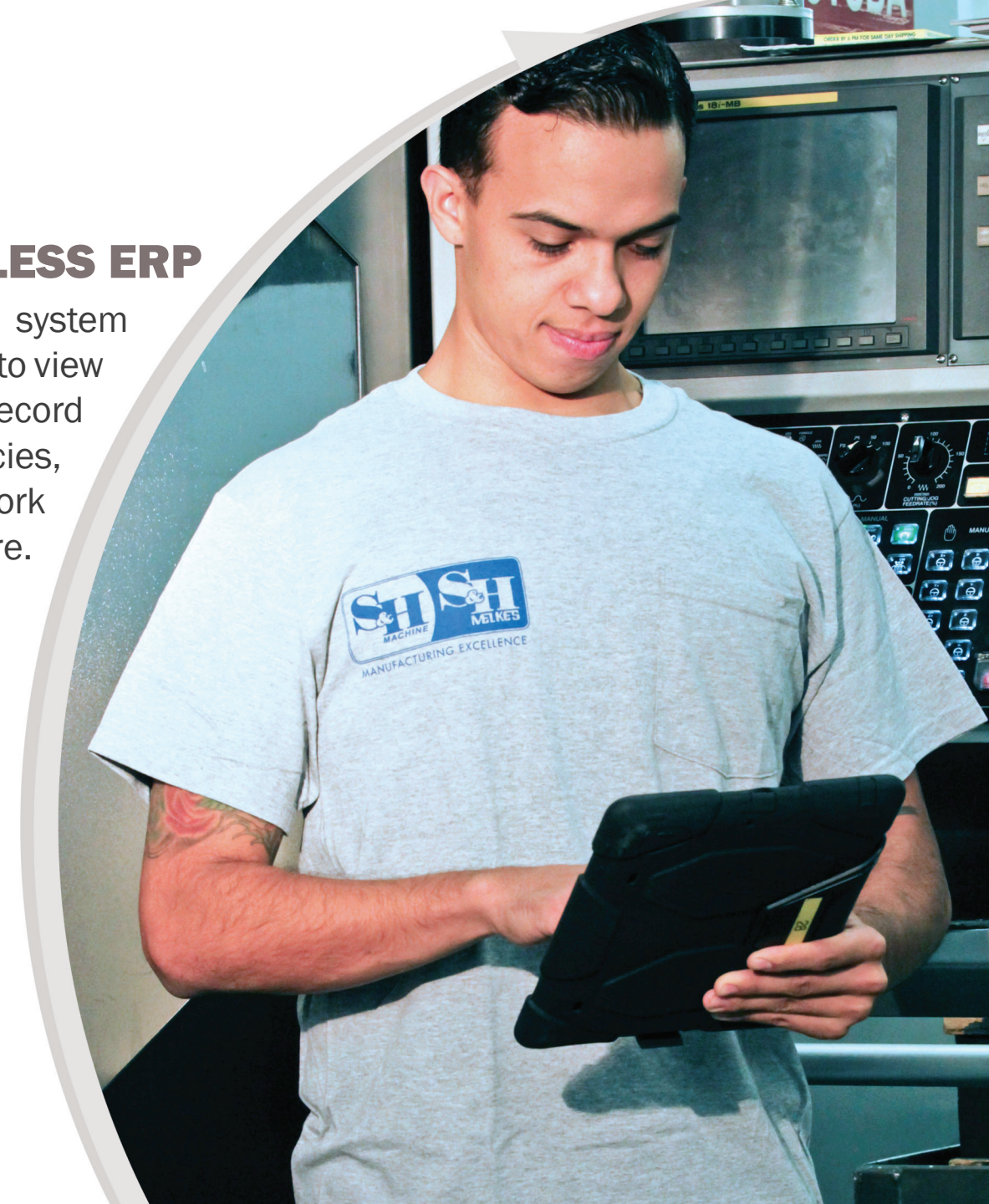
COMPETITIVE PRICING 02

Efficiency and Control
Our customers are engaged in a competition to win and maintain market share. We utilize the latest technology and Lean principles to offer products and solutions at the best possible price, thereby giving our customers a competitive advantage.



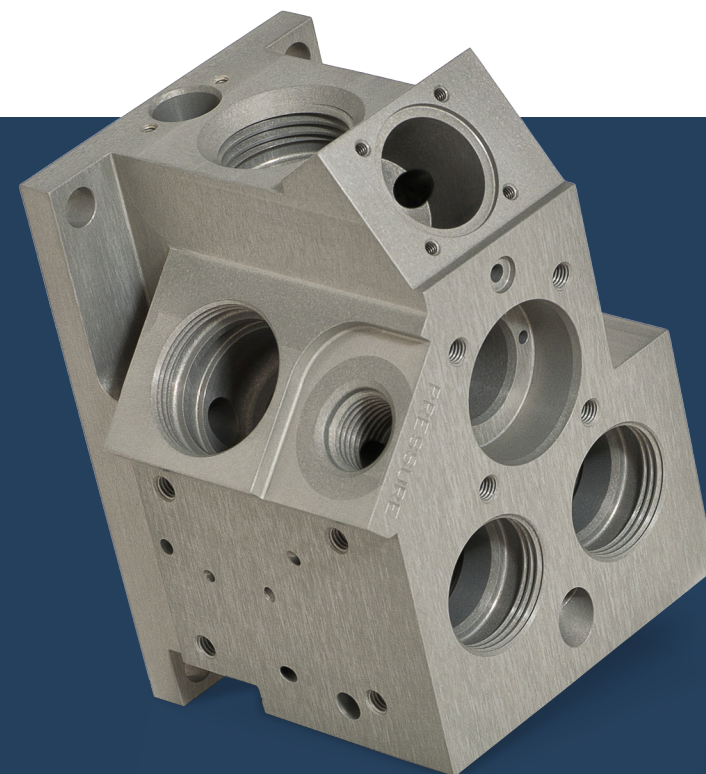
LIVE DATA, PAPERLESS ERP

iPad access to our ERP system allows our production staff to view live quality and sales data, record job time, report discrepancies, request tools, read their work order instructions, and more.



QUALITY, EVERY TIME

Our Team believes in Standard Work, and takes great pride in doing the job right the first time.



03 EXCEPTIONAL QUALITY

Award-Winning Performance

S&H is recognized as the most reliable supplier within the supply chain. Our customers demand the highest quality. Year after year, we produce thousands of products with award winning, benchmark performance.

SOLUTION ENGINEERING 04

Engineering Support

We work closely with your New Product Development team to launch new products through qualification, re-design legacy products for better performance and price reduction, and provide consistent production support. We help design and manufacture a concept into a proven product.



VALUE-ADDED SERVICES

We provide value-added services such as KANBAN and Consignment Stocking programs, Sub-Assembly, Testing and Kitting, and Supply Chain Management.

OUR PURPOSE

At S&H perfection is our mandate. There is no other option. Consistent reliability is our record. Customers trust that we will perform.

Our guarantee: We won't let you down. We will deliver. We care. Excellence is what we value. When you choose S&H...You get us.



Manufacturing Excellence

05 ON-TIME DELIVERY

Always on Time.

The customer's most expensive part is the one they don't have when they need it. At S&H we consistently deliver products that are on-time so that you can maintain your delivery requirements.

AEROSPACE

DEFENSE

INDUSTRIAL

MEDICAL

AT A GLANCE

Established in 1960

DDTC / ITAR / EAR

8 Buildings, 47,000 sq. ft.

AS9100 & ISO 9001 Certified

58 CNC Machines

22 Conventional Machines

2 Shifts, 83 Employees

OUR SERVICES

Multi-Axis Palletized CNC Machining

3, 4, and 5-axis CNC Milling

Multi-Axis CNC Turning & Mill / Turn

Engineering Support

Sub-Assembly, Testing & Kitting

Grinding

Honing

Drilling

Laser Marking

Complex Machined Parts



Manufacturing Excellence

† 818-846-9847
f 818-563-2085
info@shmachine.com

900 N. Lake Street
Burbank, CA 91502
shmachine.com

